

## BERROWHILL VIEW IN FECKENHAM

LAND FOR SALE ON BERROWHILL LANE, FECKENHAM, REDDITCH, B96 6QJ

GRAZING LAND FOR SALE CLOSE TO REDDITCH, WORCESTER,  
BIRMINGHAM, THE A441 AND M5 & M42 MOTORWAYS



Over 6 acres of pasture land for sale as a whole or in *just* 2 lots. The land lies close to large detached properties and enjoys some of the most spectacular views in the area over beautiful rolling countryside. Each lot benefits from good road frontage onto Berrowhill Lane and benefit from a shared private gated access point.

This lush grazing land is suitable for a variety of amenity, recreational or other uses (STPP). The land could also offer potential for those looking for equestrian use in an area well suited to riding out. Just 0.1 miles to the north of the land lies an extensive network of bridle paths with access directly off Berrowhill Lane.

The site is pleasantly situated within the highly sought-after and affluent village of Feckenham, south-west of Redditch, east of Worcester and south of Birmingham. The village has a thriving rural community and house prices here are *48% above* the county average and *74% above* the regional average reflecting the desirability of the area as a place to own property – including land.

|        |            |      |
|--------|------------|------|
| Lot 1: | 3.15 acres | SOLD |
| Lot 2: | 3.15 acres | SOLD |



## TRAVEL & TRANSPORT

- ◆ 2.6 miles to the A441
- ◆ 4.9 miles to Bromsgrove Train Station \*
- ◆ 5.6 miles to the M5 (junction 5)
- ◆ 6.3 miles to the A46
- ◆ 7.6 miles to the M42 (junction 2)
- ◆ 17.4 miles to Birmingham Airport

\* Journey Times: 18 mins to Worcester Foregate Street; 26 mins to Birmingham New Street; 53 mins to Birmingham International

## LOCATION

- ◆ North-west of Feckenham
- ◆ 4.2 miles to Redditch
- ◆ 6.0 miles to Bromsgrove
- ◆ 6.4 miles to Droitwich Spa
- ◆ 10.4 miles to Worcester
- ◆ 13.2 miles to Stratford-upon-Avon
- ◆ 15.9 miles to Birmingham City Centre

Feckenham is a desirable and affluent 'chocolate-box' village within the Borough of Redditch in Worcestershire, close to the border with Warwickshire. It lies 4 miles south-west of Redditch, 10 miles east of the city of Worcester and south of Birmingham.

Feckenham is a very sought-after village and is home to a family owned pub, a gastro-pub, an award winning community village shop, village green, village hall and a good primary school.

Redditch town centre is just over four miles away, providing a wide selection of indoor and outdoor leisure activities including, theatres, pubs, restaurants a cinema and an excellent selection of local shopping.

The beautiful cathedral city of Worcester is further afield and offers visitors a wealth of interesting architecture, history, culture and leisure amenities, with a very wide selection of high street names and independent boutiques.

Birmingham to the north is the second biggest city in the country. It is one of the largest international commercial centres in the world and an important transport, retail & events hub.

From museums and attractions to Michelin starred restaurants and the world-famous Bullring shopping centre, Birmingham has something to offer for everyone.

The land enjoys easy access to both the M5 and M42 motorways. The M5 links the Midlands to the South West and along with the M42, form the Birmingham Outer Ring Road. Nearby Bromsgrove Train Station provides frequent and direct links into Birmingham in just 26 minutes.



## LAND VALUES

Record-breaking low supply and rising demand are elements that have stood out for the land market so far in 2020. The property market was hit hard by the coronavirus pandemic, but **the market for blocks of bare land, in contrast, remains strong.**

Indeed, **the land market has a strong track record of not being very affected in times of economic uncertainty.** Land remains a stable, tangible asset seen as a safe haven by investors for their capital.

Land continues to be in considerable demand for capital investment for many non-farming reasons, including development potential, privacy, tax reasons, or amenity use.

## METHOD OF SALE

The land is offered for sale by private treaty as a whole or in lots. The freehold is available with vacant possession on completion.

## ACCESS

Both lots enjoy road frontage onto Berrowhill Lane and benefit from a shared private gated access point (*shown blue on the site plan*).

## HOUSE PRICES

The land is situated in an extremely affluent area. **House prices in Feckenham are 48% above the county average and 74% above the regional average** (*Zoopla*).

These premium house prices reflect the desirability of the area as a place to live and own property – including land.

## OVERAGE

Uniquely there are **no overage payments on this land** – rare in today's land market.

## PLANNING

The land is designated as Green Belt. Any development would be subject to the appropriate planning permission.

## LOCAL AUTHORITY

Redditch Borough Council  
[www.redditchbc.gov.uk](http://www.redditchbc.gov.uk)

## VIEWING

To arrange a site visit, please call 01582 788878 or email [enquiries@vantageland.co.uk](mailto:enquiries@vantageland.co.uk).



Road frontage and gated access from Berrowhill Lane

## LEISURE & EQUESTRIAN

The site lies on the edge of Feckenham, a very sought-after rural community with a traditional village green, a cricket club and an abundance of well-marked walking and riding routes.

A range of community activities includes an annual two-day horse show, and a tri-annual Feckenham Flower and Garden Festival. There is an annual Summer Fair, which has a Royal Charter and Spring and Autumn Flower Shows.

The surrounding countryside is an idyllic place to explore. There is even a nature reserve at nearby Wylde Moor, where you can see a selection of wild flowers, insects and birds.

The land offers great potential for those looking to use the land for equestrian use as it is perfectly situated in the centre of an extensive network of bridleways.

Access to these bridle paths is off Berrowhill Lane *just* 0.1 miles north of the site.

The Monarch's Way is a historic 615 mile long-distance footpath that passes approximately 1.5 miles to the east Feckenham. It follows the escape route taken by King Charles II in 1651 after being defeated in the Battle of Worcester.

This footpath takes you through two World Heritage Sites, one National Park and six Areas of Outstanding Natural Beauty plus some of the finest scenery in western and southern England.

Nearby Redditch is home to the 900 acre Arrow Valley Country Park & Lake. The park includes a Local Nature Reserve, a lakeside café, gift shop, children's play area and a skate park. The lake is also used for water sports. There are four waymarked trails for walking and riding throughout the park.

A range of attractions can also be found farther afield including the iconic Malvern Hills Area of Outstanding Natural Beauty and the hugely popular tourist town of Stratford-upon-Avon – the birthplace of William Shakespeare.

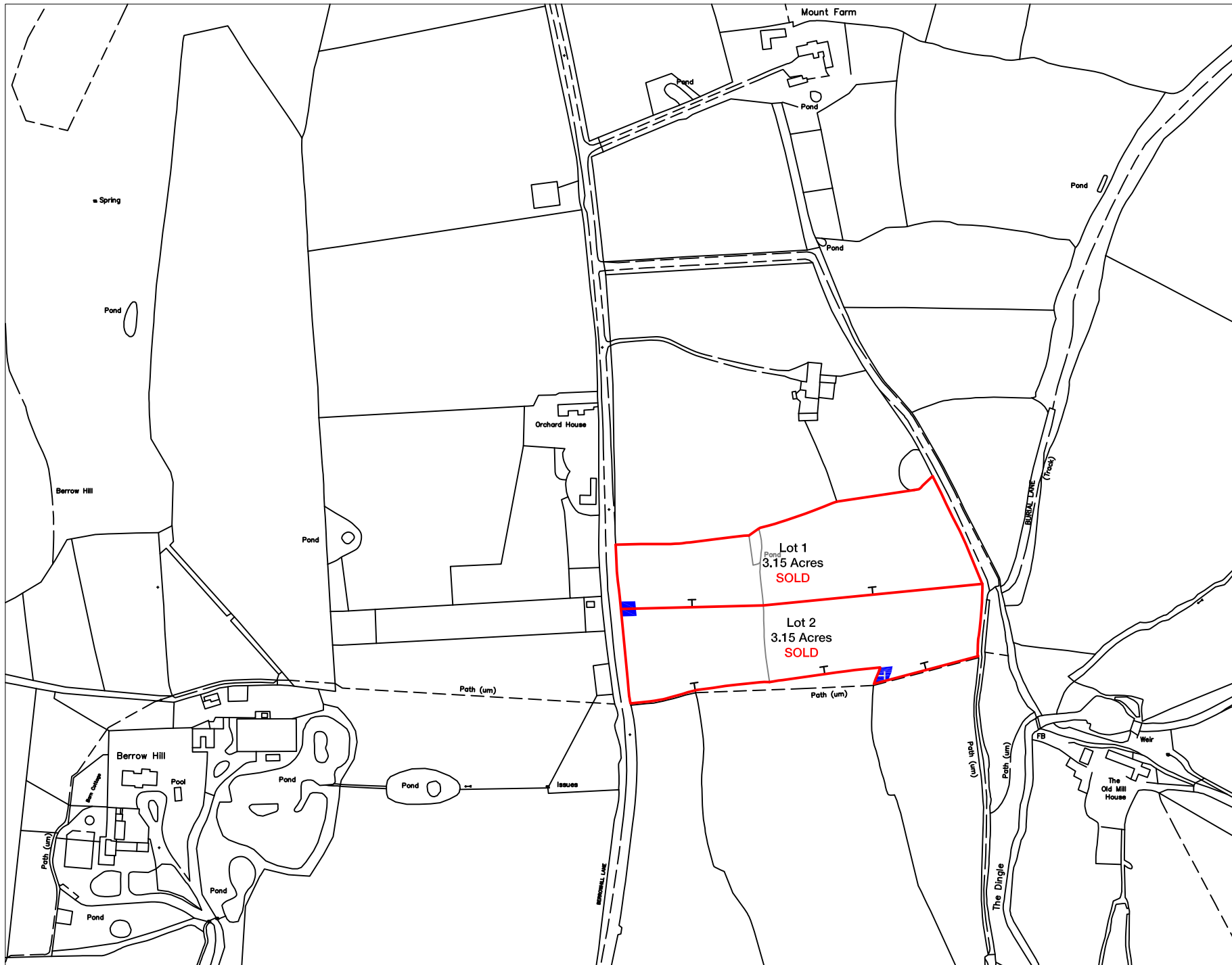


Please note, the grazing land had just been topped in this photo.

---

### THE PROPERTY MISDESCRIPTIONS ACT 1991

Vantage Land Limited has produced these particulars in good faith but cannot guarantee total accuracy. Sizes are approximate. Purchasers should verify any detail of importance prior to viewing and purchase. The particulars are not an offer or contract. Comments made in general advertising may not apply to this particular property and of course planning permission cannot be guaranteed.



17 HIGH STREET  
REDBOURN  
HERTFORDSHIRE, AL3 7LE

TEL: 01582 788878

SITE NAME:

**Berrowhill View,  
Feckenham**

WORCESTERSHIRE

POSTCODE: B96 6QJ

ORIENTATION:



SCALE:

not to scale

TOTAL ACREAGE OF OWNERSHIP:

**6.29 ACRES**  
The freehold land for  
sale is edged red

COPYRIGHT ACKNOWLEDGEMENT:

Crown Copyright.  
All rights reserved.  
License Number  
100020449